



SPRING / SUMMER 2016

by: Bridie Collins

FASHION ON THE MOVE...

A season full of amazing textile innovation! Fabrics are layered in technical complexity to create tactile, refined, supple and modern fabrics. Open weaves and transparencies abound, to create fabrics that are lightweight with movement. Natural fibers are a given for the spring season but the fiber that prevails for SS16 across the board is polyester in all its new and exciting structures and finishes.

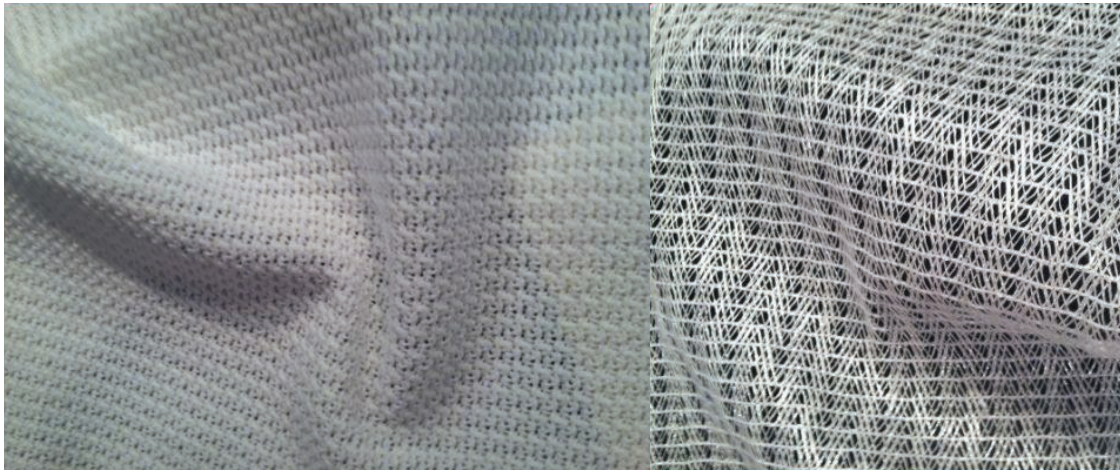

THE **fashion** GROUP INTERNATIONAL, INC

PREMIÈRE**Vi**sion
PARIS



COLOR

Subtle and unexpected, Color Duos comprise the heart of the PV Color Palette, paired on one side by a chalky mid-tone neutral palette and on the other by luminous darks. The careful selection of matte and luster, as well as metallic, anticipate a season of new harmonies. The 23 colors selected for SS16 invite creatives to consider new color plays that defy convention and move away from entrenched ideas.



▲ Pontetorto- Lean Weave

▲ Pontetorto- Metallic Coated Lean Weave

PONTEORTO

Always very strong in yarn-dye qualities and committed to innovation, this season Pontetorto offers leno weave articles that range from graphic textured stripes to open weaves in geometric patterns and crochet looks. This Method of weaving allows for looser or more open structures that are still sturdy. A group of recycled articles made from poly blends are presented in novelty structures and solid piece dye. The solid article called "new life blend" is particularly beautiful in a satin weave in cotton/poly/stretch.



▲ Canepa- jacquard grnd with overprinted cloque with fringe

▲ Canepa - Yarn Dye jacquard plaid with feather filcoupe

CANEPA

A high end Como mill, Canepa offers exquisitely crafted high fantasy articles in Yarn Dye Jacquard weaves with special effects. Artistry and technical expertise are evident in such incredible inventions as the yarn-dye jacquard with fil coupé feathers, Black and white abstract floral fil coupé cloqué with long whimsical fringes and the Yarn Dyed jacquard over printed fil coupé with transparencies. All items are made to order and custom developments are expected.



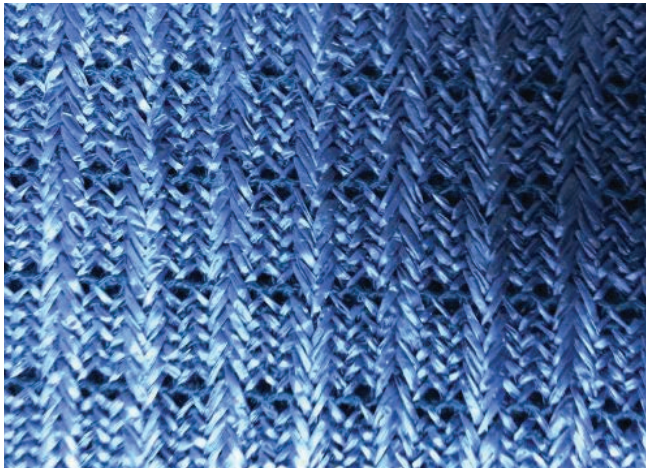
▲ Miroglio- Floral Print



▲ Miroglio- Painted Border Print

MIROGLIO

A floral is a floral is a floral? Not at Miroglio Italy this season! Japanese inspirations: Ikebana florals, deconstructed and abstract, with hand drawn brushstrokes, are emotional and compelling while woodcut peonies rendered in dark luminous combinations with pops of white create high drama. In this season of full color, Miroglio's offerings are distinguished by the technical effects their creative team employs. Brightly colored impressionistic florals are softened by misty fog effects, tropical themes in unexpected color combinations offset by neutral graphic shadows and tonal, color-washed border prints read like calming waterscapes. High contrast geometrics and florals look fresh on a new textured crepe weave the mill is proposing this season.



▲ O'Jersey- Raffia Rachel open weave



▲ O'Jersey- Summer Fleece

O' JERSEY

A young dynamic company founded in 2002, O'Jersey specializes in high end jersey knit fabric for men's women's and children's apparel. The Collection is extensive, offering a wide variety of items with special finishes and treatments to refresh each season, including laminated jersey heavy jersey fabrics with vintage finish, jacquards bonding, prints and burnout effects. For SS16 they have a new piece-dye article, "Lux Next-Generation Scuba", that's lightweight with wonderful drape. "Summer Fleece", a featherweight jersey article with a loop of clear lurex yarn is truly elegant. This season they are getting a great reaction to their newly launched novelty woven division where they offer solid leno woven patterns and cotton metal fil coupé patterns.



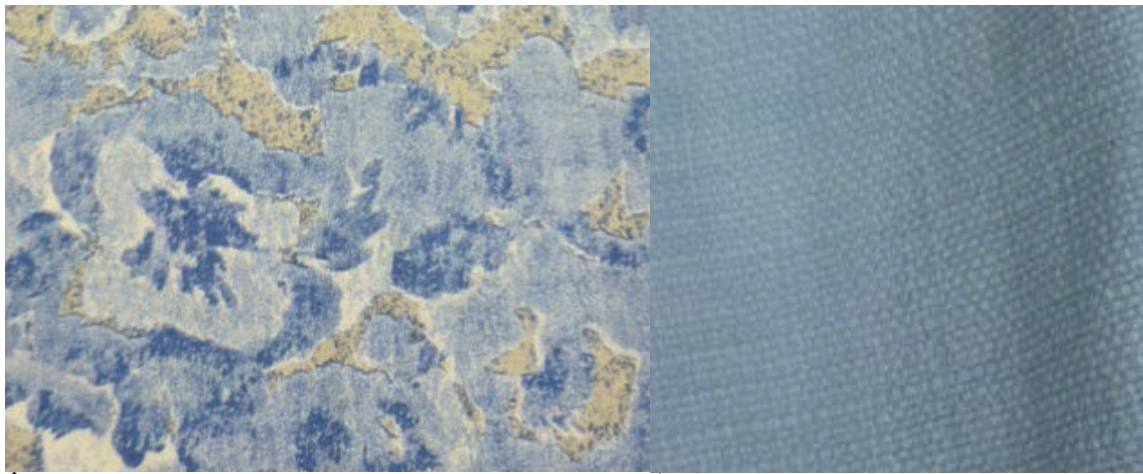
▲ Malhia Kent- Yarn Dyed Jacquard



▲ Malhia Kent- Yarn Dyed Jacquard

MALHIA KENT

Malhia Kent a supplier of custom-made fabrics to the apparel, handbag, shoe and home furnishings markets, is a collection that offers creativity with no short supply of whimsy and tongue-in-cheek humor. This season they are on point to shock and delight with their theme jacquards of bikini-clad pretty young things, marijuana leaves and portraits of the ethnic inspired princess, just to name a few. This of course, in addition to their more traditional fare of exquisitely beautiful Yarn dye Jacquard stripes. New this season are some oversized, very graphic full color architectural jacquards. Alexia By. . . . a division of Malhia Kent named after the mill owner's daughter, is a small grouping of slightly lower priced novelty articles, sold only as presented, no stock, made to order.



▲ Velcorex

▲ Velcorex

VELCOREX

A maker of fine cotton blends with stretch, noted for their superb finishes, Velcorex has many basic casual sportswear articles to choose from. They also offer a selection of prints that can be put on any base. For SS16 they are on trend with a new thick and thin Hopsack weave. Soft and luxurious, the viscose content provides a cozy aspect while maintaining the supple hand, it is suitable for all sportswear categories. A textured floral print, is denim-friendly on a khaki stretch twill.

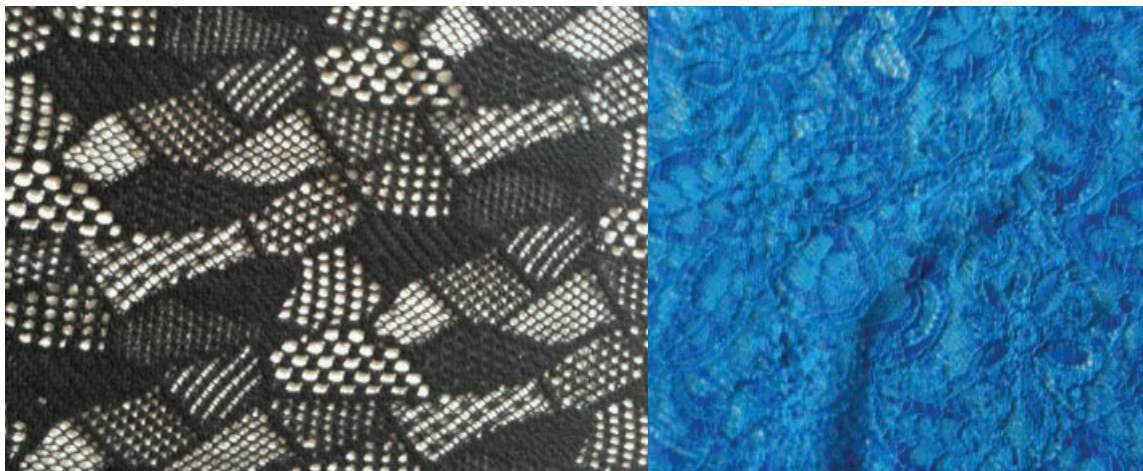


▲ Philea- Fine line Paisley

▲ Philea

PHILEA

The Philea collection is eco-friendly and every article is washable. Jacquards with matelassé effect are chic in ethnic inspired patterns and the quality has mechanical stretch. Viscose blends come in a variety of structures. Raffia Micro is a feather weight silky with a subtle matte/shine weave effect. A faille-like structure in a viscose nylon blend is lustrous and full of movement. The mill prints a fine line paisley with this as the base and the affect is complex and beautiful.



▲ Carpentier+Preux

▲ Carpentier+Preux

CARPENTIER+PREUX

Carpentier+Preux, a totally vertical knit mill, specializes in raschel and crochet looks most of which have stretch. For the SS16 season the mill is getting a nice reaction to more open patterns, mixed- stitch geometrics, all- over patchwork, stripes, medallion crochet looks and ethnic inspired geometrics and florals. In addition to the many patterns the mill offers, they are able to easily customize on most qualities.



Solstiss



Solstiss

SOLSTISS

For SS16 Solstiss announces that color is back in the world of lace from soft pastels to vibrant brights. Geometric/floral combinations are key elements of the season as well as more open grounds, some with heavy cording going in the direction of guipure to create volume and relief effects. Other treatments are Printed lace, pleated effects with holographic yarns, bondings, laminates for shine effect, silicone application effect, ombre dye and even hand painting!



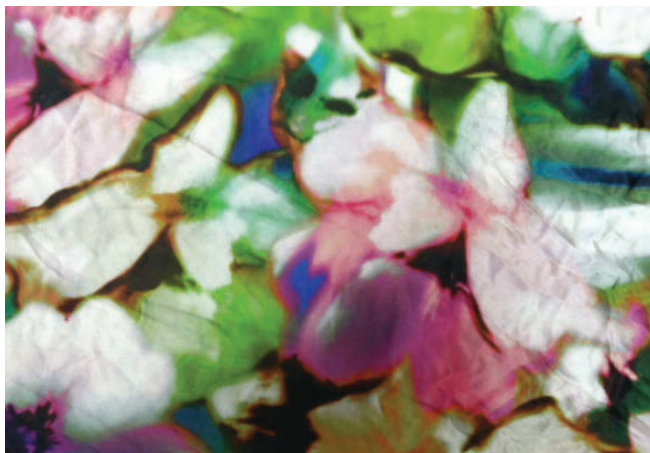
Henitex



Henitex

HENITEX

Bold, graphic and textured are the key elements in the new Henitex offerings for SS16. Some highlights: multi-color rainbow stripes with overlay of a black graphic grid pattern, black and white micro patterned dégradé panel repeat, on a pique ground, double knits in textured mini patterns, open weave jacquards on mesh and bold automatic stripes in classic color combinations.



KBC



KBC

KBC

Floral patterns at KBC look new and fresh in playful, brightly colored stripe layouts on white sheer ground, all over exploded florals in luscious color combinations are intriguing, woodcut tulips in black/ white, floating on colored grounds are graphic and appealing. Oversized bold stripe combinations in off-beat colors played against black/ white stripes in smaller settings to create dynamic juxtaposition. Ethnic inspired prints motifs appeared floating in all-overs pattern placements and border prints.

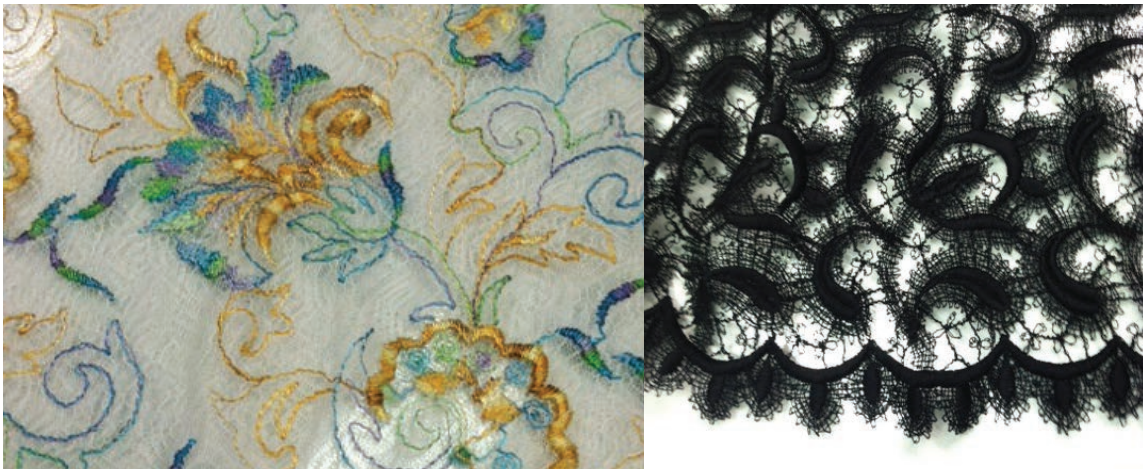


▲ Ciabatta

▲ Ciabatta

CIABATTA

Ciabatta knit line is known for their textured, tweedy knits worked in cotton blended yarns, often in denim friendly color combinations with touches of metallic and highly novel yard to create richness and textural diversity. The natural rustic look and content makes these fabrics ideal for casual sportswear. Crochet looks in very soft cotton in geometrics patterns are also strong here.



▲ Pacini Nello

▲ Pacini Nello

PACINI NELLO

Novelty driven mill Pacini Nello creates a large collection each season, always full of unexpected treasures with high emotional appeal. Floral motifs in multi colored yarns are over-embroidered on a white tulle base, black scattered fowl paisleys heavily over embroidered on very open ground with a scallop border had a eerie urban appeal. Raschel knits in mixed-stitch stripes with stretch and all over open weave geometrics also looked interesting.



▲ Debs

▲ Debs

DEBS

Debs offers solid piece dye fabrics in a variety of fibers, in novelty structures with interesting finishes. For fabrics with drape and movement this is an ideal resource. Qualities that look interesting for the season are, Mini pique with washer finish, bi-stretch double satin, vintage triple crepe and sporty double weave twill.



▲ Ratti - Elaborate Jacquard fil coupe with metallic yarns



▲ Ratti

RATTI

Ratti is showing a most interesting new fabric development- double, super high packed yarns, available in a variety of structures, these are exquisitely beautiful and strikingly modern. Of course there is no shortage of fancy developments from this mill, well known for their creativity: Geometric fil coupé shapes mix with dégradé stripes on a silky viscose, and in bold high contrast on a more structured cotton silk organza. Elaborate yarn-dye fil coupe jacquard patterns in bold red color with metallic yarns, whimsical abstract floral panel jacquards in blazing red with special fil coupé yarns that look like ostrich feather, inky hand-painted stripes on jacquard fil coupé and all natural cotton patchwork fil coupé squares with long fringe. Prints range from delicate painterly florals on matte compact poly twill to abstract color fields of mixed blues on cotton poly piqué ground.



▲ Clerici Tessuto



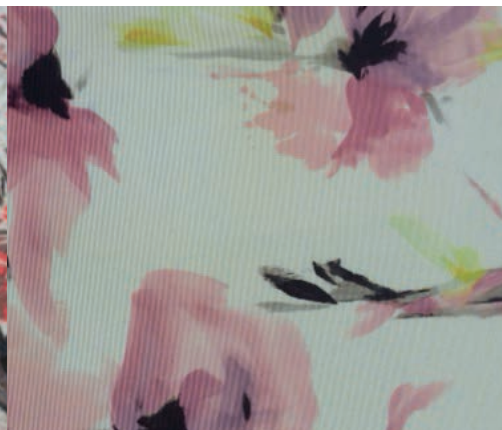
▲ Clerici Tessuto

CLERICI TESSUTO

A leading supplier of luxury fabrics, Clerici Tessuto is all custom developed, nothing is stocked, all made to order. Some of the highlights of the SS16 season: A very painterly "Abstract Sketch" reversible jacquard, displays an artistic hand-rendered drawing on an opaque surface, black and white yarn-dye fil coupe jacquard with a playful undulating pattern with border of special yarns that look like feathers and a super luxe, weighty double-face satin quality is a remarkable in that it can be dyed in solid, pattern and ombre effects. Chine floral prints, a specialty of this mill, are blurred and beautiful in full color combinations of spring flowers or autumnal variations.



▲ Brochier



▲ Brochier

BROCHIER

Brochier offers stunning watercolor print of whirling flowers in pastel confections and a yarn-dye matelassé jacquard with a windblown floral border with neon accents.



Roberto Fontoccoli



Roberto Fontoccoli

ROBERTO FONTOCCOLI

Roberto Fontoccoli has a more contemporary, highly original aesthetic, in modern looking computer grid- pattern jacquards, all over ethnic abstracts in black and matte white, abstract geometric panel repeats on a chiffon base and silky jacquard fil coupé with scattered circles interspersed with ancient looking animal imagery.

Tess is a collection geared to the bridge price point, offering highly ornamented articles on a variety of bases.

CANEPA
Jeanette Luciani
561 Seventh Ave 4th fl
NYC, NY 10018
212-302-2195
canepausa@mindspring.com

CTC USA CORP.
Clerici Tessuto, Brochier, Fontocoli, Tess
110 West 40th Street Suite 1701
NYC, NY 10018
212-869-1123
maria@ctcusacorp.com

DB SEELEY
Malhia Kent
110 west 40th St rm 207
NYC, NY 10018
212-764-0730
DBS@DISCOTEX.NET

Thierry Langlais
VP of Operations - US Office
PREMIERE VISION PREVIEW NEW YORK / INDIGO NEW YORK
T: +1 (646) 351-1942
F: +1 (646) 213-7373
C: +1 (646) 696-1584

FOX FABRICS
Debs, Pacini Nello, Ciabatta
110 West 40th suite 703
NYC, NY 10018
212-944-1001
bonniebrien@foxfabrics.com

FRED ROTTMAN GROUP
KBC Henitex
330 West 38th St Suite 1409
NYC, NY 10018
212-944-8300
FRED@PichiKBC.com

HANNA COHEN
Carpentier & Preux
246 West 38th St , 10th Flr
212-764-6215
hannacohen@aol.com

PREMIÈREVISION
PVUSA@PREMIEREVISION.COM

21 – 22 JULY 2015
Première Vision New-York – AW16-17
NEW YORK

LARRY & PAOLO INC.
Pontetorto
561 Seventh Ave 4th fl
NYC, NY 10018
212-302-3193 xt 12
paolo@2Lpr.com

MIROGLIO
Frank Iovino
1430 Broadway, 7th Flr
212-382-2020
fiovino@mirogli.net

O'JERSEY
Kristen De Marzi
561 Seventh Ave Suite 601
NYC, NY 10018
212-221-0955
kristen@ifjusa.com

15 – 17 SEPTEMBRE 2015
Première Vision Paris – AW16-17
PARIS

RATTI USA
Jacki Deena Tutelman-Bende
8 West 40th Street 17th flr
NYC, NY 10018
212-391-2191
jacki@rattiusa.com

SOLSTISS USA
Sandrine Bernard
561 Seventh Ave 21st flr
NYC, NY 10018
212-719-9194 ext 1005
sandrine@solstiss.com

STUDIO BERT FORMA, INC.
Velcorex, Philea
237 West 37th St suite 701
NYC, NY 10018
212-730-8919
karen@sbfusa.com

Report distributed at the FALL/ WINTER 2015
New York/ London / Milan / Paris Collections presented

April 09, 2015 by:
The Fashion Group International®, Inc.
8 West 40th Street, 7th Floor, NYC 10018
T: 212.302.5511
F: 212.302.5533
info@fgi.org